



FOODAXIS@SENOKO

Located within the designated food zone in Woodlands East Industrial Estate, FoodAxis is a ramp-up purpose-built facility for food processing and handling companies. It has green and energy-efficient features including naturally-ventilated high ceilings, internal air wells and a waste disposal recycling system separating organic and non-organic waste. Dedicated exhaust shafts are also specially designed for general food companies and central kitchens that are focused on the catering, processing and manufacturing of food.

1 Senoko Avenue
Singapore 758297





Floor Loading

- Production
 - 1st storey: 15.0 kN/sqm
 - 2nd – 4th storey: 12.5 kN/sqm
 - 5th storey: 12.5 kN/sqm – 15.0 kN/sqm
- Mezzanine Office
 - 1st – 5th storey: 3.5 kN/sqm

Ceiling Height

- Floor to floor
 - Production
 - 1st – 5th storey: 7.0 m
 - Mezzanine Office
 - 1st – 5th storey: 3.5 m

Column Grid

- Approx. 10.0 m x 14.0 m

Lifts

- Passenger lifts: 2 x 1,550 kg (23 persons)

Loading Bay Facilities

- Private loading/unloading bays (2 per unit)

Parking Lots

- Car: Approx. 232
- Parking lot allocation: 1 lot per 200 sqm leased

Power Supply Allocation

- Approx. 400 amps per 1,000 sqm to 1,200 sqm unit
- Approx. 500 amps per 1,200 sqm to 1,500 sqm unit

Provisions

- Dedicated refuse disposal/collection room and exhaust shaft
- Floor traps: 4 per unit
- Common grease trap
- Town gas supply
- 24-hour security surveillance
- Fire sprinkler

Amenities

- Walking distance to canteen
- Close proximity to Sun Plaza

ACCESSIBILITY

- Located along Admiralty Road West and Senoko Avenue
- 5 minutes' drive to Seletar and Bukit Timah Expressways and the future North-South Expressway
- 5 minutes' drive to Admiralty and Sembawang MRT stations

BUILDING SPECIFICATIONS

Type of Building

- 5-storey food facility suitable for food manufacturing and processing
- 40-foot container accessible to every floor

Floor Area

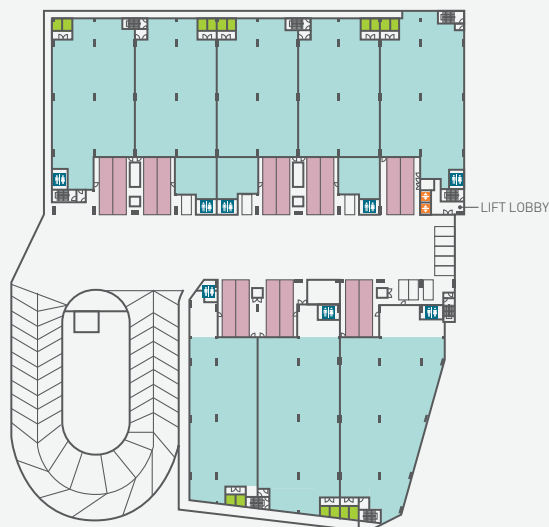
- Total NLA: Approx. 44,439 sqm

Typical Floor Plate

- 1st storey: Approx. 8,849 sqm
- 2nd storey: Approx. 8,904 sqm
- 3rd storey: Approx. 8,900 sqm
- 4th storey: Approx. 8,895 sqm
- 5th storey: Approx. 8,890 sqm

TYPICAL FLOOR PLAN

- Leasable Area
- Loading/unloading Bay
- Waste Collection Area
- ⇄ Passenger Lift
- ♿ Toilet



Lease Enquiries: 6508 8686 or sg.marketing@capitaland.com

Disclaimer

The Developer makes no representations or warranties, conditions, undertakings or terms either expressed or implied as to the condition, quality, accuracy, fitness for purpose, completeness of the information contained herein or that such information will be accurate, up to date, or free from error. All art renderings and pictures herein are artist's impressions only and all specifications stated herein are subject to re-survey and approval from the relevant authorities. The information and specifications contained herein do not form part of an offer or a contract and neither the Developer nor their appointed Marketing Agents can be held for any inaccuracies, changes, losses or damages arising therefrom.