

# 21 Collyer Quay

哥烈码头21号

21 Collyer Quay, Singapore 049320



# 21 Collyer Quay

## PROPERTY DESCRIPTION

21 Collyer Quay, a 21-storey prime office building dominates the CBD skyline with its iconic building profile in Raffles Place. The building has unrivalled panoramic views of the Singapore skyline and the Marina Bay Waterfront. The development is also surrounded by a wide range of amenities and eateries.

## EXCELLENT ACCESSIBILITY

- Within walking distance to Raffles Place MRT interchange (North-South and East-West lines)

## NET LETTABLE AREA

Approx. 213,000 sqf

## CARPARK LOTS

53

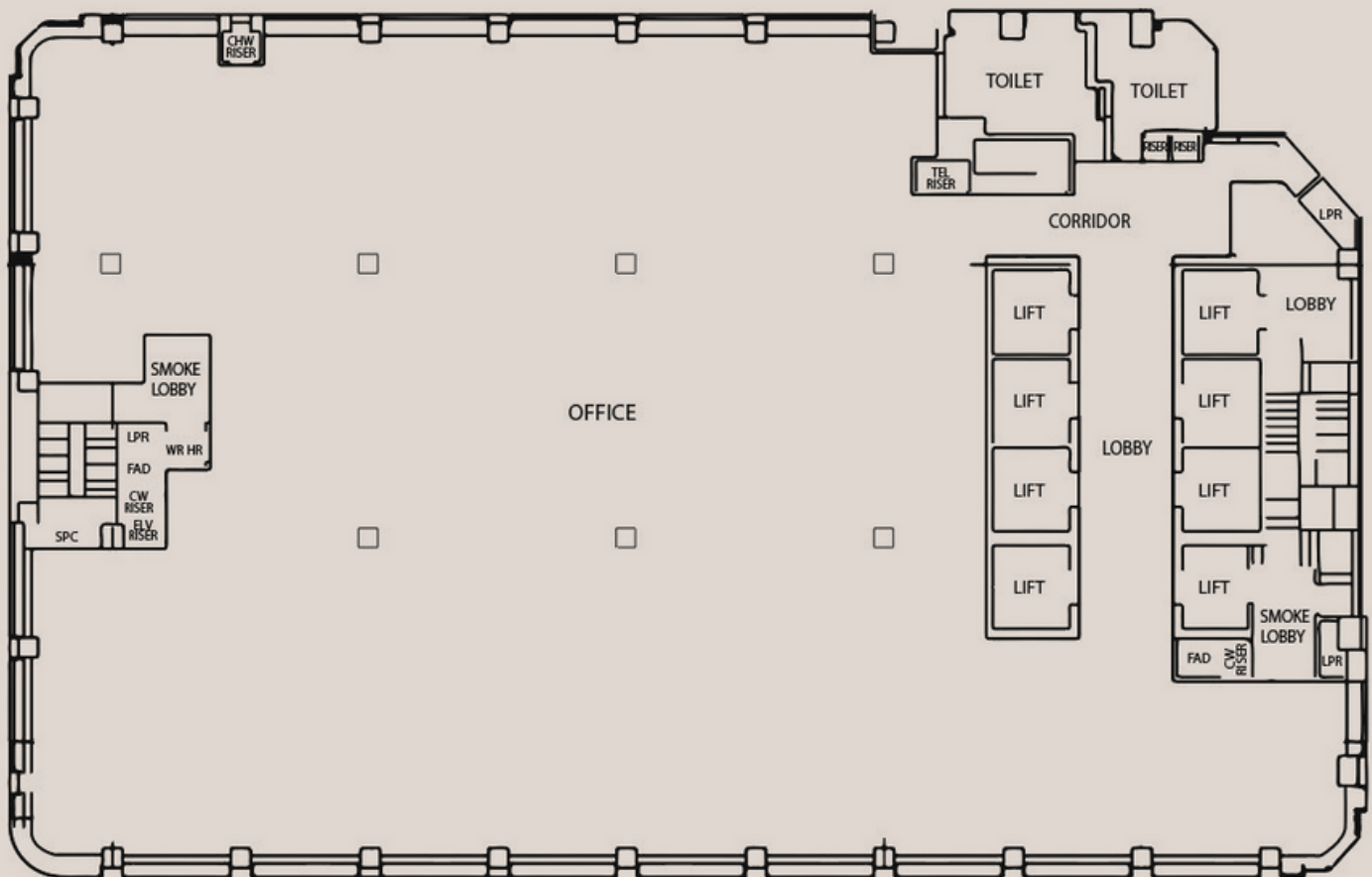
## AWARD

- BCA Green Mark Platinum

**TYPICAL FLOOR SIZE**      Approx. 10,500 sq ft

Wall to lift core                      30 m

## TYPICAL FLOOR PLAN



Leasing Enquiries [✉ sg.marketing@capitaland.com](mailto:sg.marketing@capitaland.com)

☎ 65088686

📱 9757 7000 (message-only service available on weekdays from 8.30am to 6pm)

### Disclaimer

The Developer makes no representations or warranties, conditions, undertakings or terms either expressed or implied as to the condition, quality, accuracy, fitness for purpose, completeness of the information contained herein or that such information will be accurate, up to date, or free from error. All art renderings and pictures herein are artist's impressions only and all specifications stated herein are subject to re-survey and approval from the relevant authorities. The information and specifications contained herein do not form part of an offer or a contract and neither the Developer nor their appointed Marketing Agents can be held for any inaccuracies, changes, losses or damages arising therefrom.