

Raffles City Tower

来福士城办公楼

250 North Bridge Road, Singapore 179101



Raffles City Tower

PROPERTY DESCRIPTION

Raffles City Tower is a 42-storey office building that offers high-quality offices spaces totalling approx. 382,000 sq ft. The building forms part of Raffles City Singapore, one of the largest integrated developments in the Civic and Cultural District of City Hall. It is conveniently situated amidst the 5-storey Raffles City Shopping Centre, Raffles City Convention Centre, 73-storey Swissôtel The Stamford Singapore and the 28-storey twin-tower Fairmont Singapore.

With efficient and regular-sized floor plates of approx. 11,000 sq ft, tenants can achieve optimal space efficiency here. From the fully sheltered drop-off point to the dedicated office lobby and concierge services, tenants' needs are well-taken care of. The building's natural lighting and panoramic views of the city further add a touch of luxury to its spaces.

EXCELLENT ACCESSIBILITY

- Direct and sheltered connectivity to City Hall MRT interchange (North-South and East-West lines)
- End-of-trip facilities available for sustainable commuting: bicycle lots

GREEN FEATURES

Raffles City Tower commits to sustainable practices through a range of recycling facilities and innovative systems to monitor resource use. Its comprehensive Recycling Collection Facilities process different materials such as eWaste, Plastic and Fabric, extending the lifetime of these resources.

The building is also equipped with a Smart Irrigation System with rain sensors to harvest rain water for its cooling tower. Other features such as LED lightings and motion sensors for staircase lightings enhance energy efficiency and reduce waste.

NET LETTABLE AREA

Approx. 381,400 sq ft

CARPARK LOTS

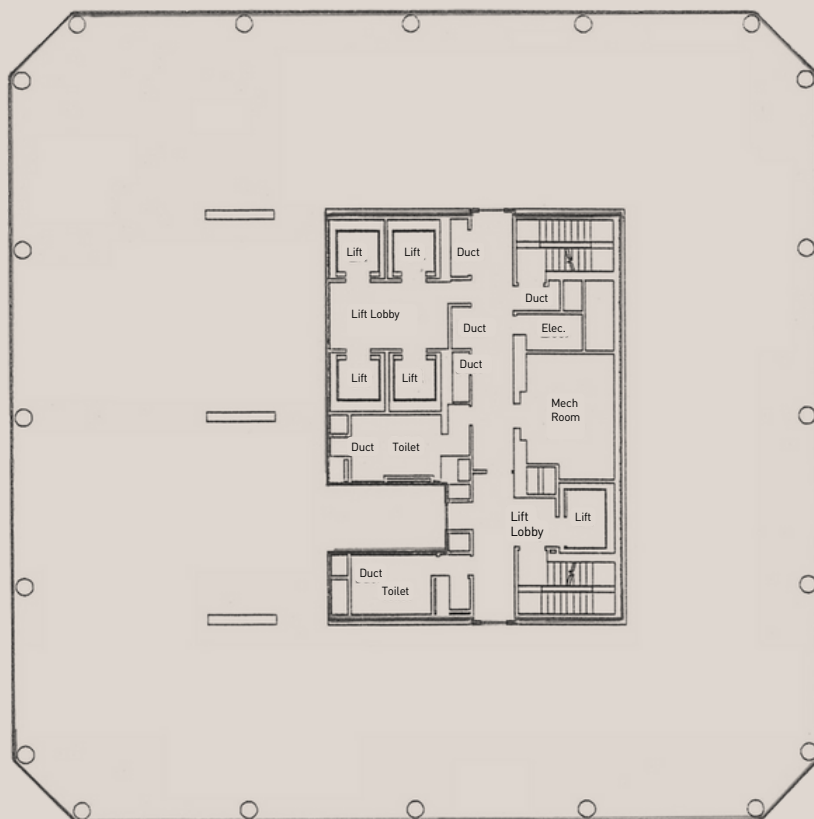
1,051

AWARD


- BCA Green Mark GoldPLUS

TYPICAL FLOOR SIZE	Approx. 11,000 sq ft
Wall to lift core (Low-Rise)	8.5 m
Wall to lift core (High-Rise)	8.5 m - 14 m

TYPICAL FLOOR PLAN



Leasing Enquiries sg.marketing@capitaland.com

 65088686

9757 7000 (message-only service available on weekdays from 8.30am to 6pm)