

# BUILDING A BETTER TOMORROW



**SOCIAL  
IMPACT REPORT  
FY 2025**

# Contents

- 03 About CapitaLand Hope Foundation
- 04 Chairman’s Message
- 06 At A Glance
- 10 Our Impact
  
- 11 **CapitaLand Community Resilience Initiative**
  
- 15 **Building Brighter Futures through Education**
- 16 Opening Doors to Education and Opportunity in Vietnam
- 17 Empowering Abilities, Strengthening Inclusion in China
- 18 Creating Environments Where Learning Thrives in India
  
- 20 **Building Healthier & More Resilient Communities**
- 21 Enhancing Youth Mental Well-being through Connection and Confidence
- 23 Supporting Seniors, Strengthening Communities in Singapore
  
- 26 **Building the Ecosystem of Good**
- 27 CapitaLand #GivingAsOne Campaign
- 29 Rallying the Community
- 31 Enabling Passion within CapitaLand
  
- 33 Acknowledgements



# About CapitaLand Hope Foundation

CapitaLand Hope Foundation (CHF) was established in 2005 as the philanthropic arm of CapitaLand Group, to support community development initiatives where the Group operates.

CapitaLand Hope Foundation (India) was established as a non-profit organisation in 2019 to further the Group’s commitment to support the communities in India, with a key focus on learning and developmental needs of underserved children across the country,

The Foundation contributes towards building resilience in communities through supporting education, health and well-being initiatives targeting at children, youth and seniors. Going beyond donations, the Foundation also advocates volunteerism as an integral part of building a caring and inclusive community.



## Mission

To help build caring, inclusive and resilient communities.

## Vision

A trusted partner to impact lives.

## Board of Directors

 <b>Mr Miguel Ko</b> Chairman	 <b>Mr Tony Tan</b> Executive Director	 <b>Mr Anthony Lim</b> Director
 <b>Mr Lee Chee Koon</b> Director	 <b>Mr Jonathan Yap</b> Director	 <b>Ms Beh Siew Kim</b> Director

# Chairman's Message



**Mr Miguel Ko**  
Chairman

2025 marks a meaningful milestone for CapitaLand Hope Foundation as we celebrate 20 years of building what matters.

Since 2005, the Foundation has remained guided by a clear belief – that lasting change is built through sustained commitment, strong partnerships, and a deep understanding of the communities we serve. Together with our partners and volunteers, we have supported programmes in education, health and well-being, building resilient, caring and inclusive communities.

To commemorate this milestone, we launched the *Building What Matters* video series, sharing stories of resilience and transformation from the communities we serve. We also hosted a Partners' Appreciation Lunch in Singapore to recognise those who have been instrumental in our journey.

As we reflect on the past 20 years, we remain focused on the future, deepening partnerships and advancing initiatives that contribute to a more inclusive and resilient tomorrow.

In 2025, we took a significant step in our commitment to community resilience with the launch of the CapitaLand Community Resilience Initiative, supported by AVPN, our global knowledge partner. The regional grant call drew over 650 applications, with 12 grantees eventually awarded a total of S\$3.4 million to advance outcome-driven solutions that empower vulnerable children and youth through education, skills development, and physical and mental well-being. Through this initiative, we are investing in high-potential organisations that can deliver meaningful, scalable impact and help shape more resilient and inclusive futures for the next generation.

Education and skills development remain central to expanding opportunities and enabling long-term social mobility. In Vietnam, we deepened this commitment through the pledge of up to S\$500,000 in long-term scholarships for 30 graduating primary school students from CapitaLand Hope Schools. This support enables their transition into junior high school and beyond, ensuring continued access to quality education and the essential resources needed to thrive. We also advanced skills development for children and youth with special needs through the CapitaLand AccessABLE Programme, which supported over 4,600 beneficiaries in 2025. By providing opportunities to build independent living and social integration skills, the programme contributes to broader pathways that support social inclusion and long-term mobility.

Mental well-being is an increasingly important foundation for resilience, particularly as children and youth navigate growing uncertainty and social pressures. In 2025, the Foundation strengthened this focus through a partnership with SHINE Children and Youth Services on BRYEA (Building Resilience through Youth-friendly, Evidence-informed Approaches), a S\$1.9 million, three-year initiative to enhance support for youth mental health and

resilience in Singapore. By supporting accessible, needs-based and youth-centred interventions, the partnership reflects our belief that long-term resilience is built not only through academic and economic support, but also through holistic investments that enable young people to build confidence, cope with challenges and thrive.

As populations age, supporting seniors' well-being remains a key priority. Since 2018, we have invested over S\$5 million through the #LoveOurSeniors initiative, enhancing the quality of life of more than 100,000 seniors. In 2025, we completed an impact study of the #LoveOurSeniors initiative in Singapore, which reported a Social Return on Investment of 2.55 times, reaffirming the meaningful social value created. The study highlights improvements in areas such as physical health, reduced loneliness and a stronger sense of belonging among seniors. Building on these outcomes, we continued to strengthen community engagement through initiatives such as the #LoveOurSeniors Carnival and the Caring Neighbours Programme, reinforcing social connection and supporting seniors to remain active, engaged and empowered within their communities.

Our impact in 2025 was supported by the collective efforts of over 9,000 CapitaLand staff, tenants and community members, demonstrating the strength of shared purpose across our ecosystem. This was reflected in CapitaLand's #GivingAsOne campaign, where over 100,000 volunteer hours were contributed globally. The Foundation matched this dedication and pledged over S\$2 million to support initiatives in education, health and well-being, of which S\$1 million was directed to programmes that benefit children and youth from lower-income families in Singapore under the Collective for A Stronger Society. These efforts highlight the value of sustained collaboration in translating shared purpose into meaningful and lasting social impact.

We are grateful to all who have walked this journey with us. Together, let us continue to drive positive social impact and build a better tomorrow.

# At A Glance

## >\$6MILLION

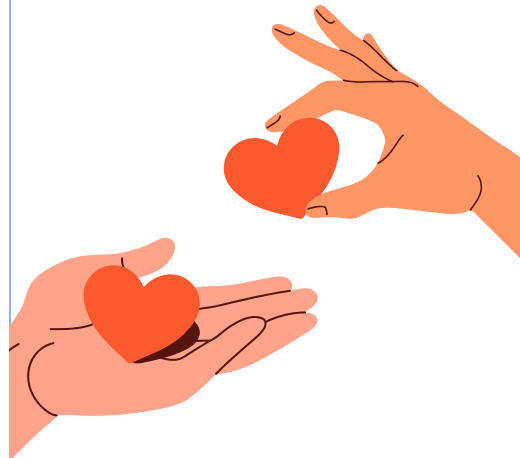
Donated Globally



## >23,000

Beneficiaries

- >14,500 gained improved access to **education and skills development**
- >8,500 benefited from **enhanced health and well-being**



## >59,000

Volunteer Hours Contributed through CHF's Supported Programmes



## 80

Community Partners



## 59\*

Projects



## 9

Countries



## 32

Cities

*\*Includes projects funded under CHF (China) Special Fund.*

# Year in Photos



## Mar 2025

### Jan 2025

#### #LoveOurSeniors Meal Delivery in Singapore

The start of CHF's annual support of special meals to over 1,200 vulnerable seniors from Cedar Tree Home Care Services and TOUCH Community Services islandwide delivered by CapitaLand staff and community volunteers on a monthly-basis.



#### Completion of new academic block at Zila Parishad High School, Manikonda, Hyderabad in India

The academic block will provide increased access to education through higher student enrolment and improved learning environments that strengthen education quality.



## May 2025

#### \$S400,000 Partnership with Save the Children and The Ascott Limited to support children and youth with disabilities

CHF's funding support will empower 160 children and youth in Thailand and the United Kingdom through inclusive skills-building and social participation programmes.



## Jul 2025

#### CHF's 20th Anniversary Partner's Appreciation Event

The event brought together more than 110 individuals from over 50 organisations across Singapore to celebrate two decades of shared purpose, enduring partnerships, and meaningful impact.



## Sep 2025

#### CapitaLand Community Resilience Initiative Grantees Announcement

\$S3.4million was awarded to 12 grantees across China, India, Singapore, and Vietnam to support vulnerable children and youth through programmes that strengthen education, skills development, and physical and mental well-being.



## Nov 2025

#### >\$S2 Million Pledged in Matching Donations by CHF for CapitaLand's #GivingAsOne Campaign

In support of the collective efforts displayed during the CapitaLand #GivingAsOne campaign, CHF pledged more than \$S2 million of matching donations to support education, health and well-being initiatives targeting children, youth and seniors.



## Feb 2025

#### Launch of the CapitaLand Community Resilience Initiative

CHF's first regional grant call to equip vulnerable children and youth with the skills, knowledge and support systems needed to thrive in the face of adversity, strengthening their resilience to ensure a stronger, more adaptive and equitable future.



## Apr 2025

#### CapitaLand-ACE! (Access Career Exploration) Programme in Singapore

In partnership with Access Singapore and The Ascott Limited, the five-week programme equipped more than 50 vulnerable youths with the skills, confidence, and guidance to navigate their career journeys and pursue greater social mobility, with support from CapitaLand staff volunteers as mentors.



## Jun 2025

#### \$S500,000 Pledge to Long-term Scholarships in Vietnam

The commitment will provide sustained educational support for 30 graduating primary school students from three CapitaLand Hope Schools in Vietnam, strengthening pathways to social mobility.



## Aug 2025

#### #LoveOurSeniors Essential Care Pack Packing & Distribution in Singapore

2,000 essential care packs were packed and delivered to enhance the well-being of vulnerable seniors, with the support of over 270 CapitaLand staff and tenant volunteers.



## Oct 2025

#### SAGE Wellness Centre Opening in Singapore

The centre has expanded access to integrated mental health and wellness services for seniors and residents to strengthen community resilience.



## Dec 2025

#### CapitaLand AccessABLE Programme Year-End Sharing & Appreciation Event in China

Charity partners, alongside CapitaLand staff, tenants, and community volunteers, exchanged inspiring stories of inclusion and recognised outstanding contributions to advancing opportunities for children and youth with special needs.



# Our Impact

## Building What Matters

Resilience lies at the heart of CHF's work.

Across the communities where CapitaLand operates, the Foundation is committed to strengthening resilience by supporting initiatives that enable individuals and communities to thrive in the face of challenges. Through programmes that advance education, health and well-being, CHF seeks to nurture a sense of belonging where individuals support one another and vulnerable members of society are empowered with greater opportunities to reach their full potential.

By leveraging CapitaLand's ecosystem of partners, volunteers and resources, CHF works alongside communities to address evolving needs and create meaningful, sustainable impact.

Together, these collective efforts contribute towards **building a better tomorrow – one where communities are more resilient, inclusive and better equipped for the future.**

### Discover Stories of Impact

Explore stories of how CHF's programmes are empowering communities and transforming lives through our video features!



## Three Pillars of Community Resilience

To create lasting social value, the Foundation focuses on strengthening community resilience through three key areas:

### Building Social Capital

Strengthening relationships, trust and community bonds through volunteerism and meaningful partnerships.



### Building Social Infrastructure

Supporting spaces and initiatives that bring people together and foster stronger community connections.



### Building Social Inclusion

Creating opportunities for individuals from all backgrounds to access resources, develop skills and reach their full potential.



# CapitaLand Community Resilience Initiative



## Inaugural Regional Grant Call by CapitaLand Hope Foundation

In 2025, CHF launched its inaugural **CapitaLand Community Resilience Initiative (CCRI)** in partnership with AVPN, a regional grant call designed to strengthen community resilience across Asia Pacific.

The response was strong, with **over 600 applications** received across China, India, Vietnam and Singapore. Following a rigorous evaluation process, **12 grantees** were awarded a total of **S\$3.4 million** in funding. Together, these programmes are projected to benefit more than **66,000 individuals**, contributing to more resilient and inclusive communities across the region.

The initiative addresses the unmet needs of vulnerable children and youth by supporting programmes that improve access to education, enhance skills development, and promote physical and mental well-being.

600+

Applications across China, India, Singapore, and Vietnam



12

Grantees

Awarded a total of S\$3.4MIL



Project to Benefit

>66,000 Individuals



# Grantees

- China**
- Beijing Western Sunshine Rural Development Foundation (北京市西部阳光农村发展基金会)
  - Guangzhou Panyu District Xingai Common Growth Charity Service Center (广州市番禺区星爱共同成长公益服务中心)
  - Ningyuan County Dayuanshe Art and Culture Exchange Center (宁远县大元社艺术文化交流中心)

- India**
- AssisTech
  - SwaTaleem Foundation
  - Teach for India

- Singapore**
- 3Pumpkins
  - Halogen Foundation
  - Presbyterian Community Social Services

- Vietnam**
- Ho Chi Minh City Child Welfare Association
  - Pacific Links
  - SPOON Foundation



## The 12 grantees will deliver programmes addressing some of the most pressing needs in the region, including:

**China:** Providing mental health support and educational opportunities to left-behind children in rural communities.

**India:** Leveraging assistive technology to enable inclusive education for children with disabilities, alongside large-scale efforts to improve access to quality teaching and empower adolescent girls.

**Singapore:** Offering entrepreneurship training for underserved youth, vocational pathways for persons with disabilities, and community-based support for children from low-income households.

**Vietnam:** Delivering education for youths-in-need, holistic caregiver support for children with disabilities, and inclusive education initiatives targeting disadvantaged communities.

# Featured Grantee

## SwaTaleem Foundation, India

Programme Name: Saheli ki Udaan (*Flight of the Friend*)



SwaTaleem, derived from ‘Swa’ (self) and ‘Taleem’ (education) – reflects the belief in owning one’s learning journey. The organisation works with rural adolescent girls to build agency through foundational English and critical life skills.

### The Challenge

Despite rising school enrolment, adolescent girls in India continue to face higher dropout rates due to early marriage, poverty and restrictive gender norms.

These challenges are further shaped by caste and socio-economic factors, where caregiving responsibilities, low expectations of girls’ education, and limited exposure to alternative pathways reduce motivation, confidence and long-term school retention.

### The Approach

Through *Saheli ki Udaan*, SwaTaleem Foundation adopts a holistic approach to empower girls while strengthening the broader education ecosystem:

- **Empowering students** with academic support, life skills and confidence-building
- **Equipping teachers** with inclusive teaching practices and professional development
- **Driving systemic change** by advocating for gender-sensitive and sustainable education models

### Intended Outcomes

- Improved academic performance, confidence and decision-making among students
- Reduced risk of school dropout and stronger learning motivation
- Enhanced teaching capabilities and more inclusive classroom environments
- Increased momentum towards institutionalising gender-transformative practices



## Support from the Initiative

CCRI provides multi-year, outcomes-focused funding, enabling organisations like SwaTaleem to move beyond short-term programme delivery towards sustainable, scalable impact.

Beyond funding, CCRI leverages CapitaLand's ecosystem of people, spaces and networks to deepen impact. For example, beneficiaries were hosted at CapitaLand's International Tech Park Bangalore, where they experienced real-world work environments and engaged

with CapitaLand staff volunteers through interactive sessions. These experiences helped build confidence, communication skills and broaden aspirations beyond their immediate communities.

More importantly, CHF works alongside its grantees as partners – supporting learning, adaptation and long-term growth, and strengthening their ability to deliver sustained impact.

“The CapitaLand Community Resilience Initiative has played an important role in strengthening SwaTaleem’s work by going beyond financial support to creating an enabling ecosystem for our girls and team. Through opportunities such as hosting girls at CapitaLand India’s office in Bangalore, CapitaLand staff volunteer engagement, and additional support like the schooling essentials distributed during International Women’s Day, the Initiative has helped broaden exposure, aspiration, and confidence among the girls we work with. The partnership has also created meaningful avenues for collaboration, visibility, and institutional support that strengthen our long-term impact.”

**Vaibhav Kumar**

Chief Executive Officer & Co-founder, SwaTaleem Foundation



Meet our CCRI 2025 grantees and understand how we are empowering them to forge stronger communities across Asia.

# Building Brighter Futures through Education

Education plays a critical role in strengthening community resilience and expanding opportunities for the next generation. Through targeted programmes and partnerships, CHF supports initiatives that improve access to education, enhance skills development, and empower children and youth to build brighter futures.

By addressing barriers to learning and enabling equitable opportunities for growth, these initiatives lay the foundations for individuals and communities to thrive – building a better tomorrow for generations to come.

## Impact Summary

> \$3.8M Donated

to improve children's and youths' access to education and skills development



36 Education-related projects

supported across 9 countries



>14,500 Children & youth

benefited from improved access to education and skills development

- >5,800 progressed from one grade level to the next in basic education
- >3,000 strengthened their numeracy and literacy skills
- >5,700 developed independent living and vocational skills



# Opening Doors to Education and Opportunity in Vietnam



## Programme

*A Step Ahead: Giving Children in Crisis a Brighter Future through Education in Vietnam* in partnership with Blue Dragon Children's Foundation

## Intention

To improve the social mobility of vulnerable children and youth by expanding access to education and empowering them with the confidence and resilience needed to shape better life choices.

## Issue

Many vulnerable children in Vietnam come from rural communities where poverty and limited access to education expose them to significant risks. Without continued access to education, career guidance and life skills development, many children struggle to rebuild stable and independent futures, leaving them vulnerable to cycles of exploitation.

## Intervention

Through the programme:

- **206 children and youth** gained access to formal education through support for tuition fees, school supplies and related learning expenses, enabling them to complete their education and earn recognised qualifications.
- **22 youths** received vocational training, including funding for training fees, uniforms, tools and course materials to support their transition into employment.
- **72 children and youth** participated in career orientation sessions, life skills classes and leadership training, helping them build confidence and develop the skills needed to make informed life decisions.

## Achievement

For many participants, education and skills development represents more than academic progress – it is a pathway to independence and renewed hope.

One such story is **Thao\***, whose journey reflects the transformative impact of sustained support and opportunity.

Two years ago, Thao was rescued from human trafficking. After a long period of psychological

support, she began rebuilding her life, but the path forward was uncertain.

With guidance from Blue Dragon's counsellors, Thao explored different pathways and shared her love for making drinks and preparing something warm for others. From there, she chose to train as a barista and began vocational training. What started as a simple interest gradually became a source of confidence and purpose.

It was not easy. In real working environments, even small interactions with customers could bring fear and doubt. But with steady support from social workers and mentors, Thao learned to cope, slowly rebuild her confidence, and keep taking small but meaningful steps forward.

Today, she is more confident, equipped with practical skills, and working towards a stable future – a journey that reflects both resilience and the power of sustained support.

*"I was very nervous the first time I made coffee for a customer. I worried that it would not be good enough and that the customer might not like it. But when I finished the drink and my supervisor said it was ready to serve, I felt relieved and happy. That moment helped me believe more in myself, that I am good enough."*

**Thao\***

*\*Name has been changed to protect identity.*



# Empowering Abilities, Strengthening Inclusion in China



## Programme

**CapitalLand AccessABLE Programme in China**

## Intention

To empower children and youth with special needs by strengthening their social interaction, adaptive capabilities and independent living skills, while fostering an inclusive environment that enables their meaningful participation in society.

## Issue

Children and youth with special needs often face limited opportunities to practice independent living and social interaction skills within everyday community settings. Many support programmes are delivered to them rather than with them, which may reduce opportunities for meaningful participation and shared experiences with others.

In addition, public awareness and advocacy surrounding inclusion remain relatively limited, creating barriers to belonging and sustained social engagement.

## Intervention

Through the CapitaLand AccessABLE Programme:

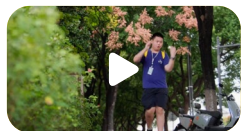
- **More than 270 activities** were conducted across **6 key cities** to support **over 4,600 children and youth with special needs** in China, focusing on community-based inclusive experiences, social integration skills and awareness-building.

- **Leveraged CapitaLand's spaces in malls and Ascott's hospitality properties** to create realworld opportunities for interaction and shared learning.
- **Supported by CapitaLand staff, tenants and community volunteers**, the programme recorded **over 12,000 volunteer hours**, strengthening community participation and support networks.

## Achievement

Through these inclusive experiences, participants gained greater confidence in navigating social environments and forming meaningful connections.

The story of **Jingyan** highlights how supportive communities can empower individuals with special needs to discover their strengths and participate more actively in society.



# Creating Environments Where Learning Thrives in India



## Programme

### CapitaLand Hope School Programme

## Intention

Established in 2005, the CapitaLand Hope School Programme aims to create safe learning environments and holistic support for vulnerable children in China, India and Vietnam. By strengthening school infrastructure and supporting educational development, the programme helps expand access to learning opportunities and supports sustained educational attainment.

## Issue

In parts of India, access to quality education remains uneven. Limited school capacity can affect students' ability to continue their studies, with some children required to transfer schools after certain grades.

Learning environments may also face challenges such as insufficient classroom furniture, inadequate lighting and ventilation, and gaps in basic hygiene facilities. Limited access to complementary learning resources such as computer labs and libraries can further affect students' learning experience.

## Intervention

In India, the CapitaLand Hope School Programme focuses on refurbishing public schools in underserved communities to strengthen infrastructure and create conducive learning environments.

Since 2021, four schools across Pune, Hyderabad, Chennai and Bangalore have been refurbished, benefiting **over 2,000 students**.

A key milestone was the CapitaLand Hope School in Pune, where the first phase of

development expanded the school's capacity from Grade 1 to Grade 7 through the addition of 16 new classrooms, upgraded sanitation facilities, and the introduction of learning spaces such as a computer laboratory and science laboratory.

In 2025, the second phase of development commenced, with plans to further expand the school by adding additional classrooms, washrooms, sports facilities and a multi-purpose court for community activities.

Beyond infrastructure improvements, the programme continues to support the school through sustained engagement and volunteerism from CapitaLand staff.

## Achievement

For students like **Pratidnya**, these improvements have transformed the learning experience.

With access to a modern library, well-equipped science laboratories and computer rooms, the upgraded school environment has sparked her curiosity and strengthened her confidence to dream bigger for herself and her community.



# Building Healthier & More Resilient Communities

Strong communities are shaped by holistic well-being, social connection and shared purpose.

CHF strengthens both physical and mental well-being across life stages, supporting youth mental wellness and improving seniors' quality of life to build caring,

resilient communities where individuals can thrive and contribute to society.

Together, these efforts contribute towards building a better tomorrow through healthier, more connected and resilient communities.

## Impact Summary

> **\$2.3M** Donated to improve health and well-being



**23** Health & well-being-related projects

supported across 4 countries



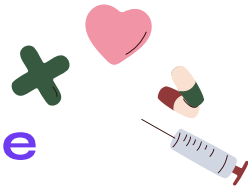
> **8,500** Children, youths & seniors

benefited from improved physical and mental well-being

- >4,700 with improved socio-emotional competencies and social support
- >1,300 with improved access and literacy of mental health
- >2,500 with improved access and literacy of physical health



# Enhancing Youth Mental Well-being through Connection and Confidence



## Programme

*We Got YOU(th) in Singapore*

## Intention

The Foundation takes a youth-centred approach to strengthening mental well-being, recognising that young people thrive when they feel supported, connected and equipped to navigate change. Across its initiatives, CHF builds social-emotional foundations such as trust, self-confidence, resilience and positive relationship skills.

Through accessible, youth-friendly programmes, these efforts create safe environments that encourage self expression, normalise help-seeking and foster meaningful connections. By integrating peer support, mentorship and skills development opportunities, youths are supported to build healthy coping strategies, a stronger sense of belonging, and the confidence to thrive and contribute meaningfully to society.

## Issue

National studies indicate that around one in three youths aged 15 to 35 in Singapore experience severe or extremely severe symptoms of depression, anxiety and/or stress. Against this backdrop, youth mental health challenges remain significant, with stigma, uneven help-seeking behaviour and gaps in access to sustained support continuing to affect many young people.

Barriers to seeking help remain high for many youths, often due to concerns about stigma, privacy and doubts over the effectiveness of available support. Youths who are not in education, employment or training (NEET) face additional challenges due to social isolation, low confidence and limited support networks. Without timely, accessible and inclusive intervention, these challenges can persist and limit young people's ability to thrive and contribute meaningfully to society.

## Intervention

The Foundation supports a range of accessible, youth-friendly programmes that strengthen mental well-being and resilience among youths:

### **BRYEA (Building Resilience through Youth-friendly, Evidence-informed Approaches)**

Launched in 2025 in partnership with SHINE Children & Youth Services, the programme aims to strengthen youth mental well-being by creating safe, accessible spaces where young people feel supported, empowered and able to thrive. Through Walk With Me, a peer-led mentorship programme, and Just Fur Fun, an animal-assisted programme, BRYEA builds resilience and encourages help-seeking through inclusive, youth-friendly approaches.

In 2025, BRYEA strengthened youth resilience and help-seeking by supporting **over 50 youths**, while equipping more than 50 community volunteers to create safer, more responsive, community-based spaces for early and sustained mental well-being support.





**Youth-REKA (Resilience, Empowerment, Knowledge, Affirmation)**

Delivered in partnership with Fei Yue Community Services since 2022, the programme provides NEET youths with a supportive environment to develop social and vocational skills. Through hands-on learning and real-world exposure, youths are able to discover their strengths and interests while building the confidence to take meaningful steps towards reintegration into society. To increase outreach in 2025, the vocational tracks expanded beyond the initial animal care and baking programmes to include new digital media and fishing.



**Achievement**

**Christine's** journey reflects what becomes possible when support is both accessible and sustained.

Once struggling with social anxiety, she found a sense of belonging through Youth-REKA's baking programme. What began as a small step into a new environment gradually became a turning point, where she gained confidence, discovered her strengths, and began to reconnect with others.

“CHF has played a significant role in supporting NEET youths through the Youth REKA programme, providing a safe and consistent space to build vocational and social skills, rebuild confidence and reconnect with others. Funding support, alongside CapitaLand staff volunteer involvement, enabled deeper partnerships with vocational stakeholders and more meaningful engagement with youths through hands-on learning and internship opportunities. New Digital Media and Fishing tracks introduced in 2025 broadened engagement, reaching youths who had not connected previously. Five years on, many alumni remain connected, with several progressing into work or education demonstrating sustained growth and resilience.”

**Andria Choo**  
Senior Social Worker, Fei Yue Community Services

Today, Christine is working at a bakery and pursuing her interest in digital art – a journey shaped by resilience, encouragement and the opportunity to move forward at her own pace.



**Supporting Seniors, Strengthening Communities in Singapore**



**Programme**

*#LoveOurSeniors in Singapore*

**Intention**

As Singapore's population ages, CHF seeks to support seniors in living healthier, more connected and dignified lives. Through #LoveOurSeniors, the Foundation focuses on improving both physical well-being and social-emotional support, ensuring seniors not only receive care, but remain active, valued members of their communities.

**Issue**

With 1 in 6 Singaporeans aged 65 and above, the nation faces growing challenges associated with ageing, including declining health, reduced mobility and increasing social isolation.

Many seniors, particularly those living alone or with limited family support, experience loneliness and reduced access to consistent care and engagement. Without sustained support, these challenges can affect both their physical health and overall well-being. any seniors, particularly those living alone or with limited family support, experience

loneliness and reduced access to consistent care and engagement.

Without sustained support, these challenges can affect both their physical health and overall well-being.

**Intervention**

Since 2018, CHF has contributed over **S\$5 million**, supporting more than **100,000 seniors** through a range of initiatives designed to improve the seniors' quality of life.

In 2025, key programmes include:

- Delivered close to 12,000 special meals to vulnerable seniors.
- Hosted a carnival for nearly 1,000 seniors, promoting well-being and community engagement.
- Distributed 2,000 care packs with food and daily necessities to seniors in need.
- Funded the refurbishment of the SAGE Wellness Centre and its programmes to expand access to integrated mental health and wellness services for seniors.



## #LoveOurSeniors in Singapore Impact Study Highlight

In 2025, the #LoveOurSeniors impact study conducted by the National University of Singapore Sustainable and Green Finance Institute reported a **Social Return on Investment (SROI) of 2.55 times**. This meant that:

**S\$4.8M**

invested by CHF into #LoveOurSeniors programmes in Singapore (as of 2024)



translates to

**S\$12.3M**

in social value



### Meaningful improvements in seniors' daily lives:

- Better physical health and nutrition through access to meals, essential goods and age-friendly facilities
- Greater independence and sense of security through home improvements and regular support
- Reduced loneliness and a stronger sense of belonging through social activities and Active Ageing Centre programmes

### Social value created across the CapitaLand ecosystem:

- Strengthened engagement, trust and social capital across CapitaLand staff, tenant and communities through shared volunteering experiences
- Deepened long-term partnerships and trust, reinforcing CapitaLand's role as committed partner in the community and building lasting social capital.

Moving forward, CHF will deepen impact in areas that matter most, while strengthening support systems and building social capital across communities.

### Long-term impacts:

- A more resilient silver population
- A more caring society
- Stronger social capital for CapitaLand

## Caring Neighbours Programme

Building on insights from the #LoveOurSeniors Impact Study, the programme was launched in 2025 in partnership with TOUCH Community Services (TOUCH) to strengthen a more connected and resilient support network through a neighbour for neighbour approach.

Through block parties, talks on building neighbourly relationships and group-based activities, around 300 seniors were reached, fostering friendships and mutual care with support from CapitaLand staff and community volunteers.

## Achievement

For seniors like **Mr Jacob** and **Mdm Samyiah**, and **Mr Sasi** and **Mdm Vijaya**, the Caring Neighbours Programme has transformed everyday interactions into meaningful relationships.

For nearly two decades, the pairs lived just one floor apart, yet their paths never crossed. That began to change when they took part in neighbourhood activities organised through the programme.

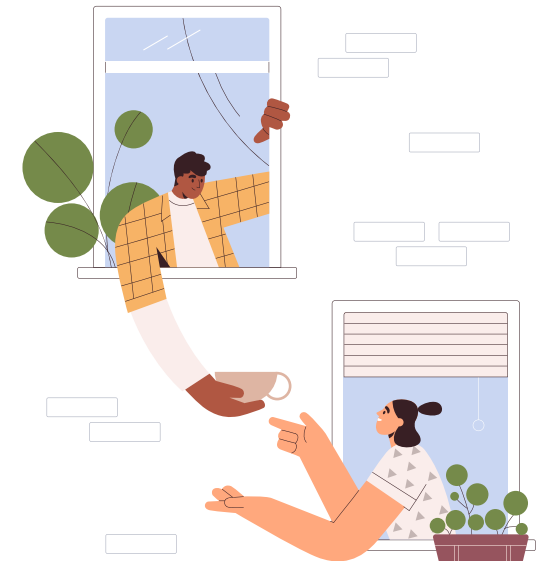
Through regular gatherings, hesitation gave way to warmth. What began as simple conversations over food and games gradually grew into familiarity, trust and genuine friendships. Neighbours began looking out for one another – checking in, offering help and spending time together beyond organised activities.

Held in familiar community spaces, and supported by CapitaLand staff and community volunteers, the activities made it easier for seniors to step forward and connect at their own pace.

Over time, these small interactions grew into informal support networks. Seniors who once felt alone now look out for one another, reducing social isolation while strengthening resilience and supporting their ability to age in place with a better quality of life.

“When TOUCH knocked at our door to invite us to the block party, we did not know what to expect. But meeting our neighbours, **Yacob and Samyiah**, was a pleasant surprise. We get along well because we are of the same age group. Our families live further away, so neighbours become our first line of help.”

**Mdm Vijaya**  
Participant of the Caring Neighbours Programme



# Building the Ecosystem of Good

At CHF, impact is not created alone, it is built through collective effort.

Across markets, what drives change is not just funding, but the collective effort of employees, tenants, partners and communities, each playing a role in strengthening lives and creating opportunities for others.

As an ecosystem catalyst, the Foundation leverages CapitaLand's ecosystem to create platforms where giving becomes accessible, participation becomes meaningful, and individual contributions are amplified into sustained impact.

This is how social capital is built – not through one initiative, but through a network of people choosing to show up, contribute, and care.



## CapitaLand #GivingAsOne Campaign



This spirit of collective action comes to life through CapitaLand's global #GivingAsOne campaign.

Each year, the campaign brings together CapitaLand staff, business partners and communities across markets – creating a shared platform to give, volunteer and uplift vulnerable groups where CapitaLand operates.

Supported by CHF, employees are not only encouraged to volunteer, but are also empowered through structured platforms and matching contributions, where every hour given translates into further support for education, health and well-being programmes.

- Over **100 activities** organised across **36 cities**
- More than **17,000 staff**, tenants and community volunteers mobilised
- Over **100,000 volunteer hours** contributed globally

- More than **130,000 children, youth and seniors supported**
- Over **S\$2 million pledged by CHF**, including matching donations

In Singapore, the campaign took on added significance through collaboration with Give.Asia and SG Cares as part of SG60. With the collective achievement of **50,000 volunteer hours**, CHF fulfilled its pledge of **S\$1 million**, supporting programmes under the Collective for a Stronger Society for lower-income families.

What began as individual acts of giving became something much larger – a shared movement of people coming together to create meaningful change.



## CapitaLand #GivingAsOne Impact Across Communities

Across different markets, these efforts took shape in ways that responded to local needs, demonstrating how collective action can translate into meaningful outcomes

### China

Over **1,000 children and youth with special needs** developed life skills and confidence through CHF's CapitaLand AccessABLE programme, supported by volunteers across 12 cities

### Indonesia

Through the Play – Learn – Give initiative, **50 children** from SOS Children's Villages and ISCO Foundation strengthened their problem-solving and social skills through interactive activities, supported by **74 Ascott staff volunteers** across 32 properties.

### Singapore

Close to **1,000 seniors** experienced improved social inclusion and well-being through the #LoveOurSeniors Carnival – co-created with seniors and Ngee Ann Polytechnic students and supported by over **650 CapitaLand staff, tenants and community partners**.

### Thailand

Over **200 Ascott staff volunteers** distributed essential schoolwear to **students from 29 schools** in vulnerable communities, with funding support from CHF and Ascott— enhancing school readiness and well-being.

### India

Around **70 CapitaLand staff volunteers** worked alongside Pratham Education Foundation to revitalise seven government schools, transforming learning environments through mural painting, gardening and storytelling, while engaging nearly **100 students**.

### Vietnam

More than **8,000 CapitaLand staff and community members** participated in the "Together We Step: Step For Kindness" community run, unlocking over US\$97,000 in funding from CHF to support vulnerable children through improved access to education, care and safer environments, in partnership with Blue Dragon Children's Foundation.

### Malaysia

CHF funded **RM200,000 worth of essential supplies** distributed by over **200 CapitaLand staff volunteers** to support close to **2,250 underserved children and low-income families** through the #GivingBersama 5.0 initiative.

### Cambodia

**14 Ascott staff volunteers** delivered hygiene education sessions and assembled health kits for **90 vulnerable children** in Ta Khmau.

## Rallying the Community



As one of Asia's largest diversified real estate groups, CapitaLand's tenants, business partners, and the wider community are important stakeholders in its ecosystem. Through in-kind sponsorships and volunteerism, they help amplify positive impact and become a powerful force for good.

**63**  
Tenant  
Companies



**5,300**  
Tenant &  
Community  
Volunteers



From providing meals and essential items to facilitating learning experiences and social engagement, partners contributed resources, time, and care. These contributions extended programmes beyond traditional support, creating environments where beneficiaries could learn, interact, and grow, while fostering greater awareness within the community.



### Creating Moments of Connection: #LoveOurSeniors Carnival in Singapore



At IMM in 2025, the #LoveOurSeniors Carnival brought together close to 1,000 seniors, supported by charity partners including FaithActs, Fei Yue Community Services, SAGE Counselling Centre and TOUCH Community Services, alongside over 600 CapitaLand staff volunteers, 40 Ngee Ann Polytechnic students, tenants and community partners.

For many seniors, the experience went beyond a day out, it was a chance to feel included, connected and cared for. **HaiDiLao Singapore** curated senior-friendly hotpot meals, creating a warm and delightful dining experience, with many seniors enjoying hotpot for the first time. Going beyond the partial sponsorship of meals, each senior received a goodie bag prepared by the restaurant staff, extending care beyond the meal.

At the same time, students from the Diploma of Community Development & Psychology at **Ngee Ann Polytechnic** co-created activities with senior volunteers, translating classroom learning into meaningful engagement while fostering genuine intergenerational connections.

Together, these efforts demonstrate how CHF brings together its ecosystem to deliver collective impact, transforming individual contributions into shared experiences of connection, inclusion and belonging.

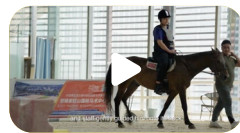


### Building a Place for Hope: CapitaLand AccessABLE Programme in China

Founder of Saga Pony Club, **Gu Shiqi** partnered with CapitaLand and tenants at Suzhou Center to create inclusive, real-world experiences for children and youth with special needs.

By opening up his space, beneficiaries were able to build confidence, develop social skills and engage meaningfully beyond structured settings. Supported by CapitaLand staff and tenant volunteers, these sessions created opportunities for interaction, growth and inclusion within everyday community spaces.

This collaboration reflects how CapitaLand's ecosystem comes together, where partners are not just contributors, but co-creators of impact.



### Enabling Passion within CapitaLand

At the heart of CHF's work is the belief that lasting impact is driven by people.

Through structured volunteer platforms, CHF empowers CapitaLand employees to contribute their time, skills and passion, not just as participants, but as active contributors and advocates for change. Across markets, employees continue to step forward, turning intention into action and strengthening communities through shared purpose.

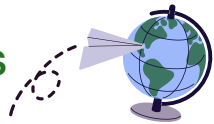


>3,500

CapitaLand Staff Volunteers



Across 5 countries



### Rec Club Volunteer Group: Turning Collective Purpose into Action



It began with a simple, shared belief—that social inclusion can only be realised when people come together to build it collectively. Across South China, colleagues from different cities and departments came together to form **Rec Club**, an employee-initiated volunteer group grounded in collective contribution. What connected them was not proximity, but purpose. Ideas, energy, and commitment flowed across locations, shaping a quiet but powerful movement within the organisation. Through CHF's CapitaLand AccessABLE

programme in China, this movement found direction and scale. Rec Club partnered with local charities, co-creating experiences for children and youth with special needs to strengthen their confidence, social interaction and sense of belonging. Each initiative was intentional—whether through outdoor explorations or shared social moments that fostered trust and connection. Leveraging on CapitaLand's ecosystem in Chongqing, Xi'an, Changsha, and Wuhan, Rec Club mobilised mall tenants to be part of the journey, transforming everyday spaces into platforms for inclusion. Cinemas opened their doors not just for screenings, but for experiences—welcoming

youths into environments where they could explore, imagine and see new possibilities for themselves.

As participation grew, so did a collective sense of purpose, reflected in its high employee engagement rate of 86%. More than numbers, it was a shift in perspective—where colleagues found meaning beyond their roles.

Looking ahead, Rec Club seeks to deepen partnerships and inspire broader participation in its impact journey, guided by the belief that inclusion is strongest when built collectively.

“Through CHF’s programmes, we found a shared platform to build what matters – where colleagues, partners and communities come together with purpose, and where inclusion is not just envisioned, but experienced and shaped collectively.”

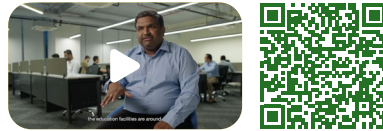
**Sun Jian**  
Manager, Corporate Communications,  
CapitaLand Investment (China)

### Empowering People to Drive Change

Meet **Suraj**, Lead Manager in Project Management (Business Park) at CapitaLand Investment (India).

Through the CapitaLand Hope School Programme, Suraj contributed to the transformation of the Zilha Parishad Primary School in Pune, helping to create a modern learning environment that has expanded access to quality education for children in surrounding communities.

Hear his story that showcases how CHF leverages CapitaLand’s ecosystem and empowers its people and communities to make a positive impact.



# Acknowledgements

- ACER COMPUTER (SINGAPORE)
- A\*STAR RESEARCH ENTITIES
- ASTONS SPECIALITIES
- AXESS OFFSHORE
- BHG RETAIL REIT
- C-BRIDGE CAPITAL INVESTMENT MANAGEMENT
- CITIBANK SINGAPORE
- COLLIERS INTERNATIONAL (SINGAPORE)
- CSIT PTE. LTD.
- DOW JONES & COMPANY (SINGAPORE)
- FOSSIL SINGAPORE
- GIANT (SINGAPORE)
- GUARDIAN HEALTH & BEAUTY SINGAPORE
- GUOTAI JUNAN INTERNATIONAL (SINGAPORE)
- H Aidilao SINGAPORE
- INDUSTRIAL SCIENTIFIC SINGAPORE
- JONES LANG LASALLE PROPERTY CONSULTANTS
- KENNAMETAL SINGAPORE
- LENSKART SOLUTIONS
- LEPRINO FOODS (SINGAPORE)
- MERCK MITSUI CHEMICALS ASIA PACIFIC
- NSG BIOLABS
- OAKS PLUS
- RECKITT BENCKISER (SINGAPORE)
- ROCHE DIAGNOSTICS ASIA PACIFIC
- SEOUL GARDEN GROUP
- SG SOLUTION STACK
- SHIHLIN TAIWAN STREET SNACKS.
- SHIMADZU (ASIA PACIFIC)
- SINGAPORE BOATING INDUSTRY ASSOCIATION
- SOUP RESTAURANT GROUP
- STRAITS PROPERTIES LIMITED
- SUBWAY SINGAPORE
- SUMITOMO MITSUI BANKING CORPORATION (SINGAPORE)
- THERMO FISHER SCIENTIFIC ASIA
- ZTP HOLDINGS

- 波司登 (CHINA)
- 参曼健身 (CHINA)
- 朝花里 (CHINA)
- 晨光 (CHINA)
- 长安国际影城 (CHINA)
- 迪卡侬 (CHINA)
- 高途素养 (CHINA)
- GogoReading英文分级阅读馆 (CHINA)
- 海底捞 (CHINA)
- 汉翔书法 (CHINA)
- 花舞秋田 (CHINA)
- 京书院 (CHINA)
- 兰湘子 (CHINA)
- 炼炼有意思瑜伽普拉提 (CHINA)
- 绿光派对 (CHINA)
- 码高科技成长中心 (CHINA)
- 米村拌饭 (CHINA)
- 名创优品 (CHINA)
- 奈雪 (CHINA)
- 聂卫平围棋道场 (CHINA)
- 全棉时代 (CHINA)
- 时间仓 (CHINA)
- 童程童美 (CHINA)
- 完美影城 (CHINA)
- 喜茶 (CHINA)
- 小米 (CHINA)
- 中音阶梯少儿音乐 (CHINA)

CAPITALAND  
hope  
FOUNDATION

VISIT US AT  
[www.capitalandhopefoundation.com](http://www.capitalandhopefoundation.com)

